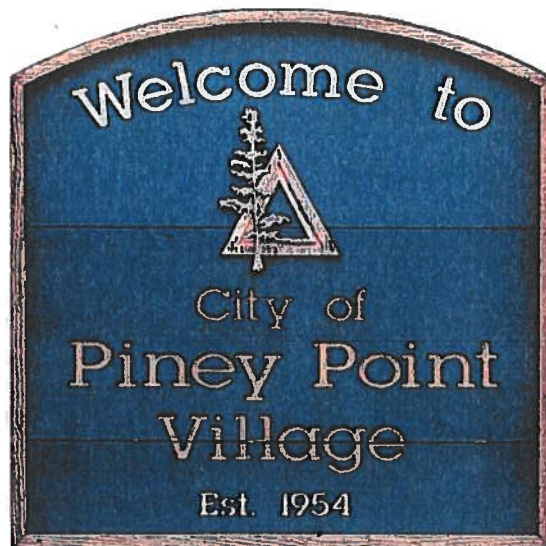
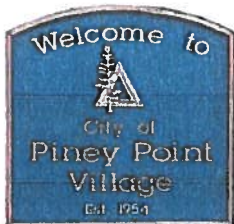


# CITY OF PINEY POINT VILLAGE TEXAS

Benchmark System



2525 North Loop West, Suite 300  
Houston, Texas 77008  
713-861-7068



# Piney Point Village Benchmark Station

City of Piney Point Village  
Benchmark Sheet

Benchmark No. 1

General Location: On South End of East Headwall @ Piney Point Rd. South of Holidan Way

Latitude: 29° 46' 30.33666" N  
Longitude: 95° 31' 03.11286" W  
Grid Northing: 13,845,816.49  
Grid Easting: 3,073,089.72  
State Plane Coordinates, Texas South Central  
Zone (4204), NAD83.

Elevation: 74.68 NAVD88, 2001 Adj.

2" Brass Disk in Conc. Stamped "BM 1"  
Surveyed August 2008, Landtech Consultants,  
Inc.

Horizontal positions were established using GPS  
(RTK). Elevations were established using  
differential leveling. Harris County FEMA  
(TSARP) Benchmarks 210130 and 210135  
were held for horizontal and vertical control.  
Unit of Measure: U. S. Survey Foot

## Detail Sketch:

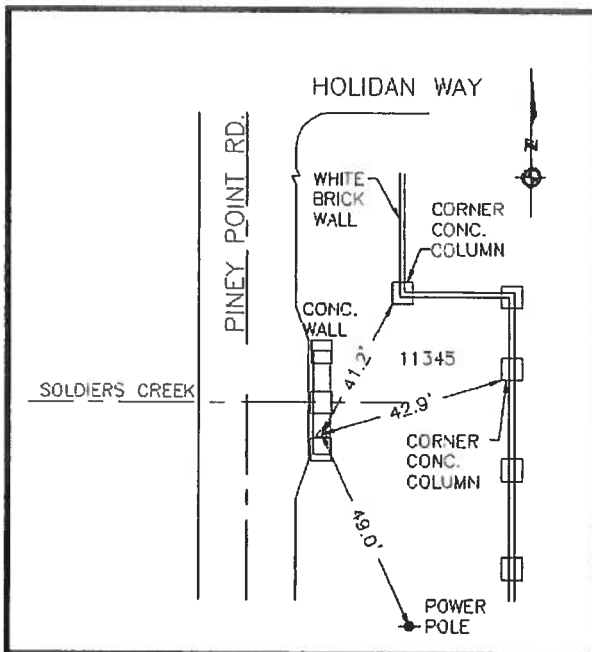


Photo 1-Station Detail:

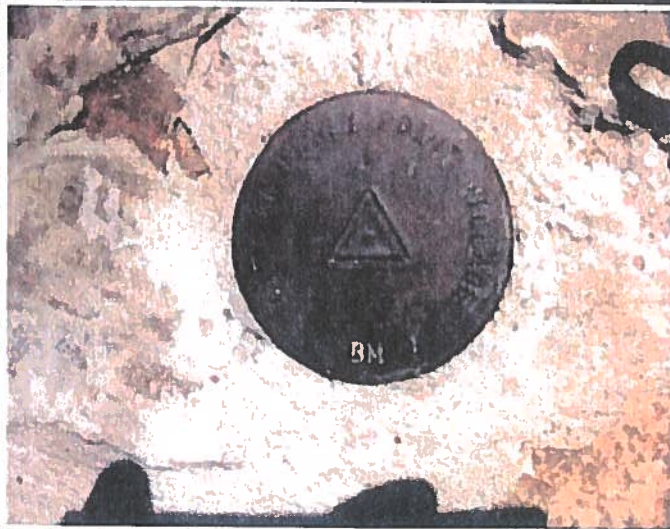


Photo 2-Station Area Picture:







# **Piney Point Village Benchmark Station**

**City of Piney Point Village  
Benchmark Sheet**

**Benchmark No.**

**2**

**General Location: Top of Inlet, SE Corner of Piney Point Rd. & Greenbay Rd.**

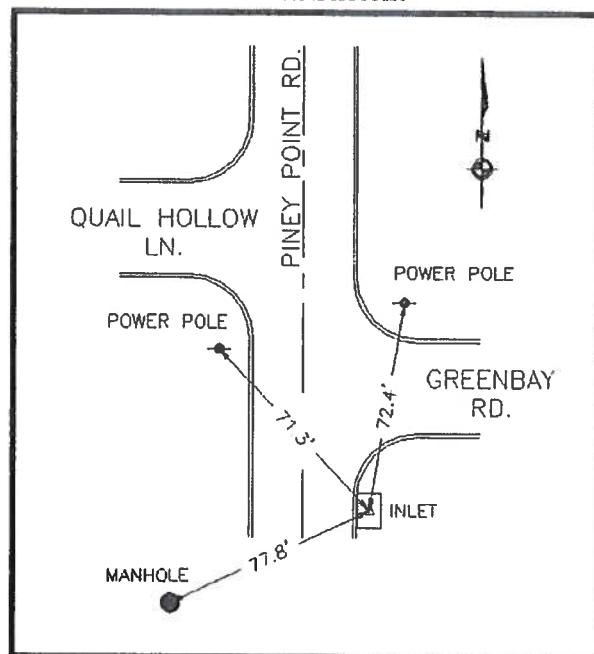
Latitude: 29° 45' 44.50926" N  
Longitude: 95° 31' 02.57629" W  
Grid Northing: 13,841,190.92  
Grid Easting: 3,073,274.80  
State Plane Coordinates, Texas South Central  
Zone (4204), NAD83.

Elevation: 69.16 NAVD88, 2001 Adj.

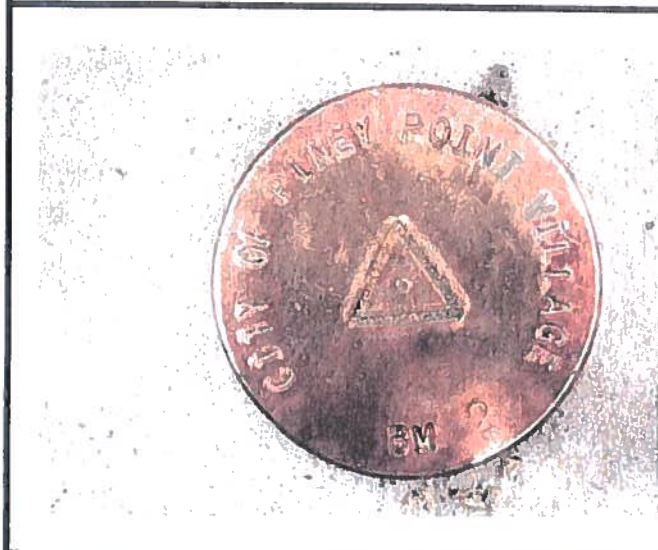
2" Brass Disk in Conc. Stamped "BM 2"  
Surveyed March 2008, Landtech Consultants,  
Inc.

Horizontal positions were established using GPS  
(RTK). Elevations were established using  
differential leveling. Harris County FEMA  
(TSARP) Benchmarks 210130 and 210135  
were held for horizontal and vertical control.  
Unit of Measure: U. S. Survey Foot

## **Detail Sketch:**



**Photo 1-Station Detail:**



**Photo 2-Station Area Picture:**





# **Piney Point Village Benchmark Station**

**City of Piney Point Village  
Benchmark Sheet**

**Benchmark No.**

**3**

**General Location: Top of Inlet @ NW Corner of Piney Point Rd. & Memorial Dr.**

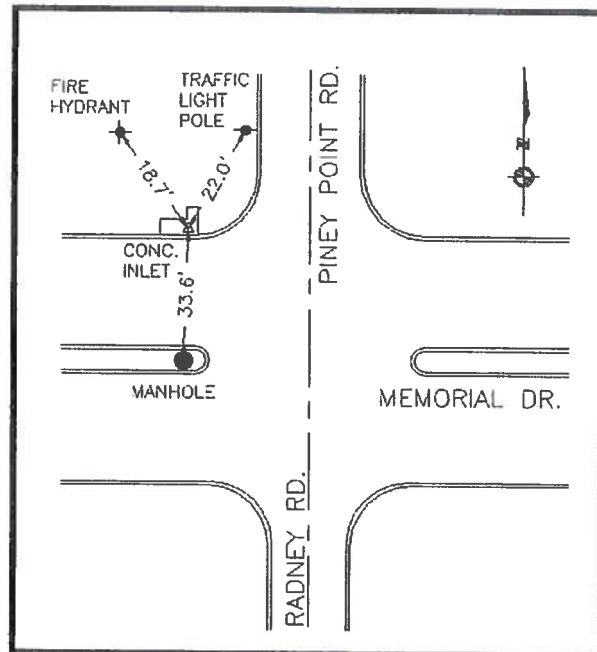
Latitude: 29° 45' 04.30209" N  
 Longitude: 95° 31' 02.89379" W  
 Grid Northing: 13,837,130.57  
 Grid Easting: 3,073,367.75  
 State Plane Coordinates, Texas South Central  
 Zone (4204), NAD83.

Elevation: 64.81 NAVD88, 2001 Adj.

2" Brass Disk in Conc. Stamped "BM 3"  
 Surveyed March 2008, Landtech Consultants,  
 Inc.

Horizontal positions were established using GPS  
 (RTK). Elevations were established using  
 differential leveling. Harris County FEMA  
 (TSARP) Benchmarks 210130 and 210135  
 were held for horizontal and vertical control.  
 Unit of Measure: U. S. Survey Foot

## **Detail Sketch:**



## **Photo 1-Station Detail:**



## **Photo 2-Station Area Picture:**







# Piney Point Village Benchmark Station

City of Piney Point Village  
Benchmark Sheet

Benchmark No.

4

General Location: West Side of Conc. Walk @ S. Piney Point Rd. Bridge Over Buffalo Bayou

Latitude: 29° 44' 48.54601" N  
Longitude: 95° 31' 24.46074" W  
Grid Northing: 13,835,483.21  
Grid Easting: 3,071,514.97  
State Plane Coordinates, Texas South Central  
Zone (4204), NAD83.

Elevation: 64.03 NAVD88, 2001 Adj.

2" Brass Disk in Conc. Stamped "BM 4"  
Surveyed March 2008, Landtech Consultants,  
Inc.

Horizontal positions were established using GPS  
(RTK). Elevations were established using  
differential leveling. Harris County FEMA  
(TSARP) Benchmarks 210130 and 210135  
were held for horizontal and vertical control.  
Unit of Measure: U. S. Survey Foot

## Detail Sketch:

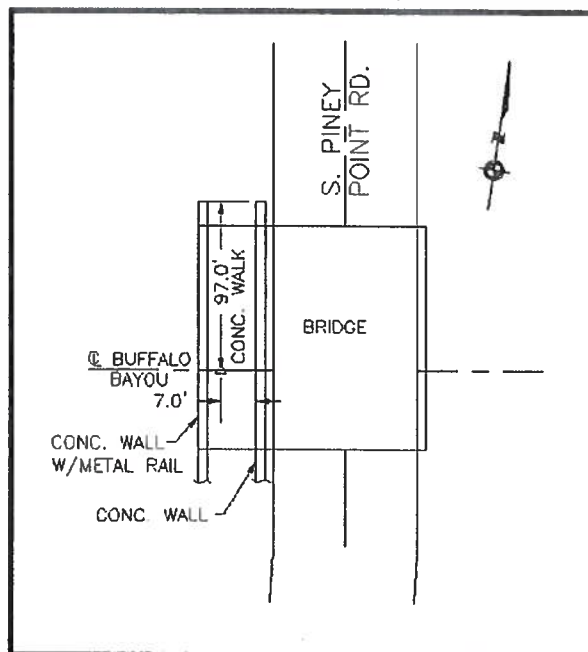


Photo 1-Station Detail:



Photo 2-Station Area Picture:





# Piney Point Village Benchmark Station

City of Piney Point Village  
Benchmark Sheet

Benchmark No.

5

General Location: Top of Inlet @ 11002 Greenbay Rd. at Memorial Dr.

Latitude: 29° 45' 45.47510" N  
Longitude: 95° 30' 25.04107" W  
Grid Northing: 13,841,387.07  
Grid Easting: 3,076,578.44  
State Plane Coordinates, Texas South Central  
Zone (4204), NAD83.

Elevation: 61.48 NAVD88, 2001 Adj.

2" Brass Disk in Conc. Stamped "BM 5"  
Surveyed March 2008, Landtech Consultants,  
Inc.

Horizontal positions were established using GPS  
(RTK). Elevations were established using  
differential leveling. Harris County FEMA  
(TSARP) Benchmarks 210130 and 210135  
were held for horizontal and vertical control.  
Unit of Measure: U. S. Survey Foot

## Detail Sketch:

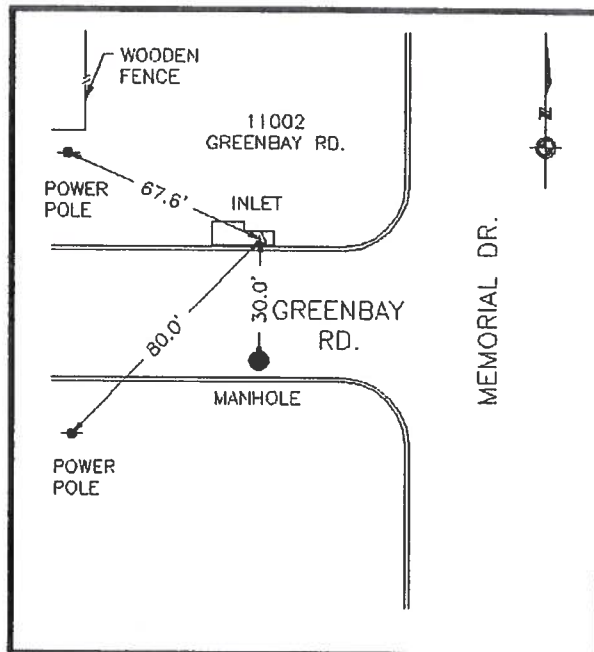


Photo 1-Station Detail:

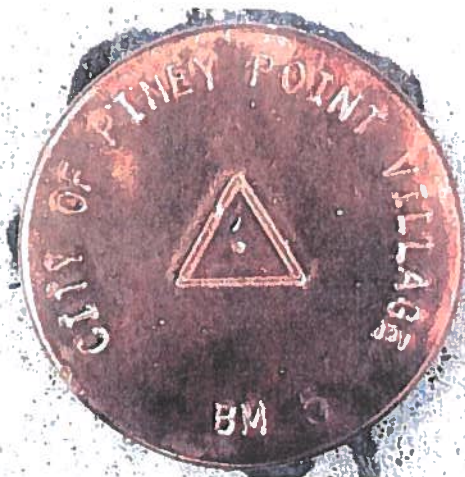
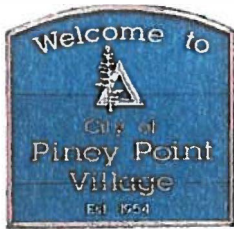


Photo 2-Station Area Picture:







# Piney Point Village Benchmark Station

City of Piney Point Village  
Benchmark Sheet

Benchmark No.

6

General Location: Top of Headwall @ SE Corner of Hedwig Rd. & Hedwig Shadows Dr.

Latitude: 29° 46' 16.28848" N  
Longitude: 95° 30' 31.76751" W  
Grid Northing: 13,844,480.45  
Grid Easting: 3,075,893.00  
State Plane Coordinates, Texas South Central  
Zone (4204), NAD83.

Elevation: 69.50 NAVD88, 2001 Adj.

2" Brass Disk in Conc. Stamped "BM 6"  
Surveyed March 2008, Landtech Consultants,  
Inc.

Horizontal positions were established using GPS  
(RTK). Elevations were established using  
differential leveling. Harris County FEMA  
(TSARP) Benchmarks 210130 and 210135  
were held for horizontal and vertical control.  
Unit of Measure: U. S. Survey Foot

## Detail Sketch:

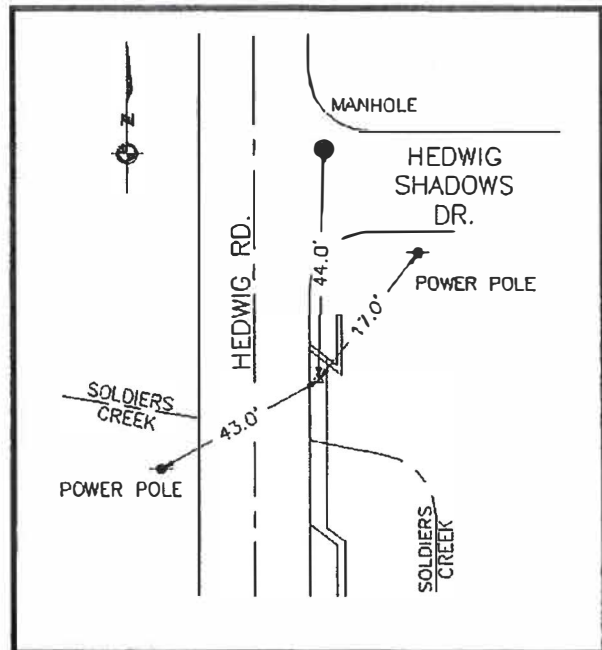


Photo 1-Station Detail:



Photo 2-Station Area Picture:





# **Piney Point Village Benchmark Station**

**City of Piney Point Village  
Benchmark Sheet**

**Benchmark No.**

**8**

**General Location: Top N.E. Corner of Inlet on West Side of Hedwig Rd. just North of Hedwig Green**

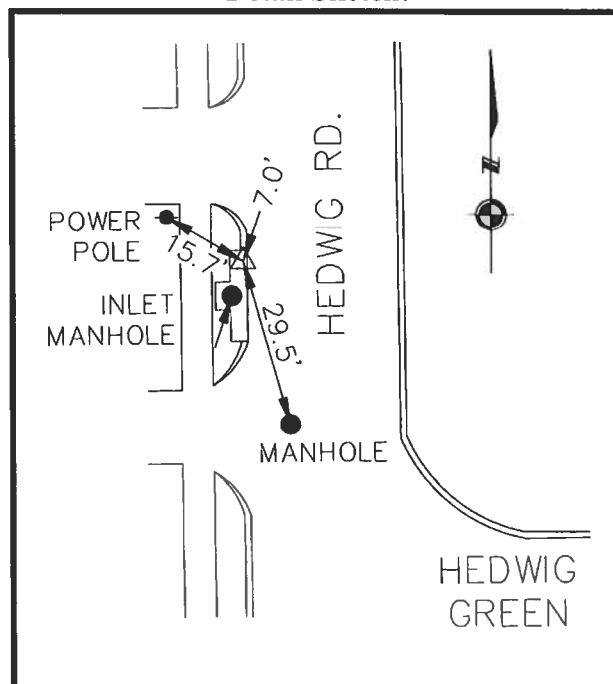
Latitude: 29° 46' 13.90399" N  
Longitude: 95° 30' 32.04423" W  
Grid Northing: 13,844,238.97  
Grid Easting: 3,075,875.81  
State Plane Coordinates, Texas South Central  
Zone (4204), NAD83.

Elevation: 66.70 NAVD88, 2001 Adj.

2" Brass Disk in Conc. Stamped "BM 8"  
Surveyed April, 2015, Landtech Consultants,  
Inc.

Horizontal positions were established using GPS  
(RTK). Elevations were established using  
differential leveling. Harris County FEMA  
(TSARP) Benchmarks 210130 and 210135  
were held for horizontal and vertical control.  
Unit of Measure: U. S. Survey Foot

**Detail Sketch:**



**Photo 1-Station Detail:**



**Photo 2-Station Area Picture:**

